

System 10 Certificate of Conformity

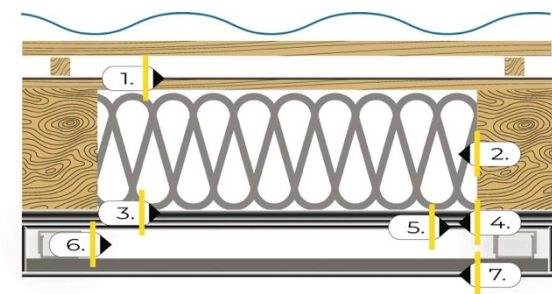
The most efficient solution for passive houses.

Objective

Providing the technical solution that guarantees the Passive House standard is exceeded with

correctly selected materials that are healthy for human health and sustainable.

Products that make up System 10 ($R=4.67 \text{ m}^2\text{K/W}$)



1. Isoflect Contact Pro
2. Isoflect Wolle P1500 (10 cm)
- 3 + 4. Isoflect Multistrat
5. Isoflect Gold
6. Structure of metal profiles/wooden sheet, providing a 3-10 cm thick air layer.
7. Isoflect Multistrat

Thermal performance

System 10 + 5 cm Isoflect Wolle: $R = 5.97 \text{ m}^2\text{K/W}$.

System 10 + 10 cm Isoflect Wolle: $R = 7.37 \text{ m}^2\text{K/W}$.

System 10 + 15 cm Isoflect Wolle: $R = 8.67 \text{ m}^2\text{K/W}$.

System 10 + 20 cm Isoflect Wolle: $R = 10.07 \text{ m}^2\text{K/W}$.

Installation

1. Isoflect Contact Pro - diffusion membrane for outdoor installation.
2. Isoflect Wolle - heat-insulating fleece made of synthetic wool, to be fitted between the rafters.
3. Isoflect Multilayer - thermal insulation membrane & vapour barrier. Fit in two overlapping layers, directly on the rafters, with the pure aluminium foil facing outwards.



Technical Support



+40217807585
+40790067438



office@isoflect.ro



www.isoflect.ro
www.isoflectinsulation.eu



Băneasa Business & Technology Park
42-44 București - Ploiești Street
District 1, Bucharest, Romania,
C.P. 13696



4. Isofect Gold - thermal insulation membrane. It is installed immediately over the layers of the 3rd layer. For a quick, one-pass installation, the membranes in points 3 and 4 can be assembled from below. Seal all joints/perforations etc. with Isofect Power Tape.
5. Installation of the structure of metal profiles or wooden beams, depending on the project. This area also includes installations.
6. Isofect Multilayer, with aluminium foil facing outwards. It is applied directly to the profiles, using double-sided adhesive tape and self-drilling screws. At the end, all joints/perforations are sealed with Isofect Power Tape.

Benefits and features

Health

Isofect Wolle is the only heat-insulating fleece that does not contain any chemicals. There are about 25 chemicals in the other insulations.

These substances break down over time and even mix into the air inside homes (especially when insulation is installed indoors). These substances are generally referred to as VOCs (volatile chemicals). Of these approx. 25 substances, about 20 cause diseases, from the simplest allergies to cancers of many kinds. Some of the substances cause foetal malformations.

The special production technology of Isofect Wolle insulation does not involve any added chemical substances, proof of which is the Standard 100 Certificate, which classifies the product as Class I safe, including for babies' health.

Sustainability

System 10 contains materials with unlimited lifetime.

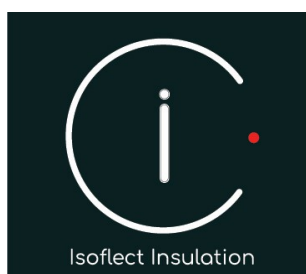
Isofect Wolle is an insulation that uses up to 70% recycled raw material. At the end of its service life, Isofect Wolle insulation is recycled at conventional recycling centres and does not need to be sent back to the factory. Isofect Wolle, can become in its next life clothing, food and water packaging, children's items, medical equipment, etc.

Submitted:
Dipl. Ing. Bogdan Ivănescu

Date:
18.06.2024

All information in this document is the intellectual property of Isofect Insulation.

© All rights reserved 2024.



Technical Support



+40217807585
+40790067438



office@isoflect.ro



www.isoflect.ro
www.isoflectinsulation.eu



Băneasa Business & Technology Park
42-44 Bucuresti - Ploiesti Street
District 1, Bucharest, Romania,
C.P. 13696

